

THREE-WAY PLUG VALVE PN10/16/150#



Fig. 6413

Features

| | |
|--------------|----------------|
| Design | API599 / API60 |
| Rating | PN10/16/150# |
| Face to face | DIN3202 F1 |
| Ends | Flanged |

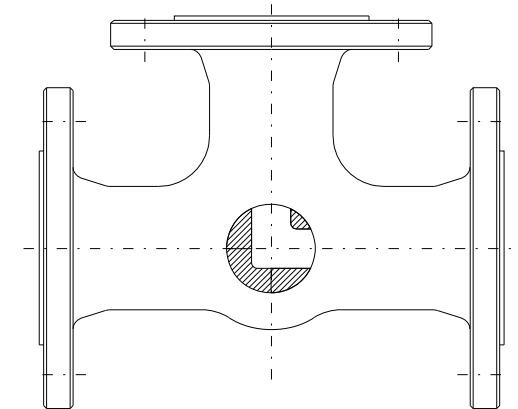
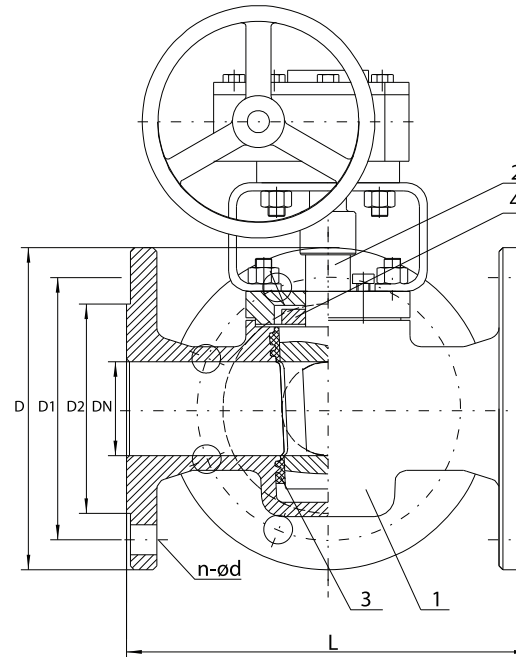
Third way can be side or bottom entry
Optionally: Jacketed typed

Materials

| N° | Part name | Material |
|----|-------------|----------------------|
| 1 | Body | A216 WCB / A351 CF8M |
| 2 | Plug - Stem | A182 F6A / A182 F316 |
| 3 | Seat | PTFE |
| 4 | Gasket | A182 F304 |

Main dimensions

| DN | L | PN10 | | | | PN16 | | | | 150# | | | |
|-----|-----|------|-----|-----|-------|------|-----|-----|-------|------|-------|-----|-------|
| | | D | D1 | D2 | n-ød | D | D1 | D2 | n-ød | D | D1 | D2 | n-ød |
| 15 | 130 | 95 | 65 | 45 | 4-14 | 95 | 65 | 45 | 4-14 | 88,9 | 60,5 | 35 | 4-16 |
| 20 | 150 | 105 | 75 | 58 | 4-14 | 105 | 75 | 58 | 4-14 | 98,5 | 70 | 43 | 4-16 |
| 25 | 160 | 115 | 85 | 68 | 4-14 | 115 | 85 | 68 | 4-14 | 108 | 79,5 | 51 | 4-16 |
| 32 | 180 | 140 | 100 | 78 | 4-18 | 140 | 100 | 78 | 4-18 | 117 | 89 | 64 | 4-16 |
| 40 | 200 | 150 | 110 | 88 | 4-18 | 150 | 110 | 88 | 4-18 | 127 | 98,5 | 73 | 4-16 |
| 50 | 230 | 165 | 125 | 102 | 4-18 | 165 | 125 | 102 | 4-18 | 152 | 120,5 | 92 | 4-19 |
| 65 | 290 | 185 | 145 | 122 | 4-18 | 185 | 145 | 122 | 4-18 | 178 | 139,5 | 105 | 4-19 |
| 80 | 310 | 200 | 160 | 138 | 8-18 | 200 | 160 | 138 | 8-18 | 190 | 152,5 | 127 | 4-19 |
| 100 | 350 | 220 | 180 | 158 | 8-18 | 220 | 180 | 158 | 8-18 | 229 | 190,5 | 157 | 8-19 |
| 125 | 400 | 250 | 210 | 188 | 8-18 | 250 | 210 | 188 | 8-18 | - | - | - | - |
| 150 | 480 | 285 | 240 | 212 | 8-22 | 285 | 240 | 212 | 8-22 | 279 | 241,5 | 216 | 8-22 |
| 200 | 600 | 340 | 295 | 268 | 8-22 | 340 | 295 | 268 | 12-22 | 343 | 298,5 | 270 | 8-22 |
| 250 | 730 | 395 | 350 | 320 | 12-22 | 405 | 355 | 320 | 12-26 | 406 | 362 | 324 | 12-25 |



| Position | 1 | 2 | 3 | 4 |
|----------|------------|------------|------------|------------|
| L | 1 ⊕ 2 3 | 1 ⊕ 2 3 | | |
| T | 1 ⊕ 2 3 | 1 ⊕ 2 3 | 1 ⊕ 2 3 | 1 ⊕ 2 3 |